



Small informational sign with text and a logo.



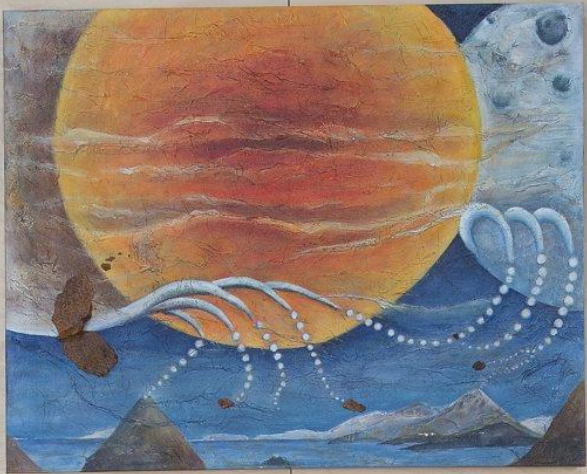






MARCEL JANOTTE  
IN MEMORIAM  
2019 - MARCEL





Marta Wronski Dip.  
Küçük boyutlu  
2014



Marta Wronski Dip.  
Çift boyutlu  
2014









Handwritten text on the paper:

VERUM SOP VID  
EIDURIED  
RAD MUM GOTI STAUDA  
LIVVERFING

Small label on the pallet:

Handwritten text on the label:

Handwritten text on the label:



### Slitvindar

Drekinn eða hippocampus er heilastöðin sem gegnir mikilvægu hlutverki í minnisfestingu. Drekinn er ekki sá staður sem varðveitir minnisatriði, nema þá tímabundið. Langtímageymsla endurminninga á sér stað í heilabeki og þá í nánunda við þau svæði sem minningarnar eiga heilann fyrst. Sjónrænar upplýsingar eru geymdar nálægt sjónsvæðum heilans sem er aftan á hnakkablaðinu, hjóðrænar eru nálægt heyrnarvæðum á gagnaugablaðinu. Æðri skynsvæði heilabarkar, þau sem koma síðust í röð þeirra heilsvæða sem flokka má sem skynsvæði, eiga greiða leið að drekanum sem sendir svo aftur boð til fjölmargra svæða heilabarkar sem geymir langtíma minnið. Þá vaknar spurningin: Fyrst minningar eru á endanum varðveittar í heilabeki hvers vegna er þá fyrst verið að senda þær frá skynsvæðum heilabarkar til drekans og svo þaðan að nju til heilabarkar?

Þessi sýning segir aðeins frá þessu ferli heilastöðvanna þar sem einn grefur í hnakkablað heilans og minnst rauða stólsins sem var blágrænn og annar fer á vit gagnaugablaðs heilans og nær í hjóð slitvindsins í gegnum túlkun á aldráðan flýgil fjölskyldunnar og frárennsli sræsis. Sá þriðji fer vitt og um svæði heilans og veltir fyrir sér fálsmíningum og draumum – einhverskonar slitvindum heilans.

Að sýningunni standa:

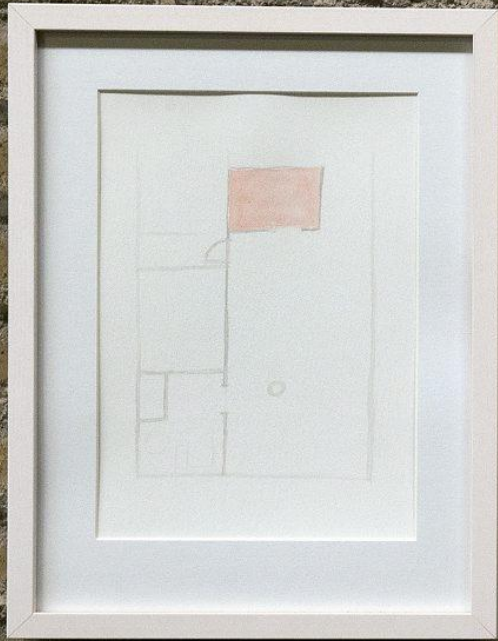
Jón Sigurpálsson, Gunnar Jónsson og Ranveig Jónsdóttir.

Margrét Gunnarsdóttir túlkar slitvindinn á aldráðan Blüthner flýgil frá Leipzig sem fylgt hefur fjölskyldunni svo lengi sem elstu menn muna

Þessi sýning er höfð af Ranveig Jónsdóttir







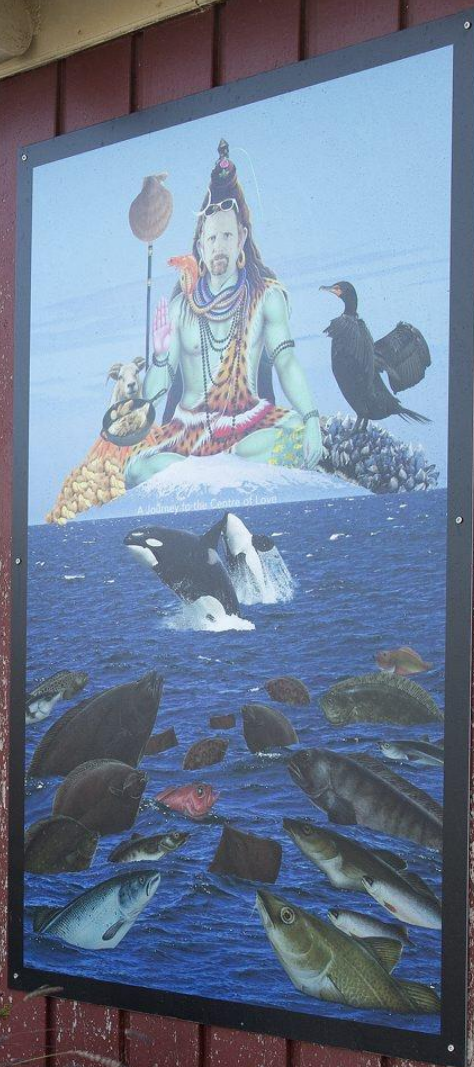












Magnus Spelman  
A Journey to the Center of Earth  
2018







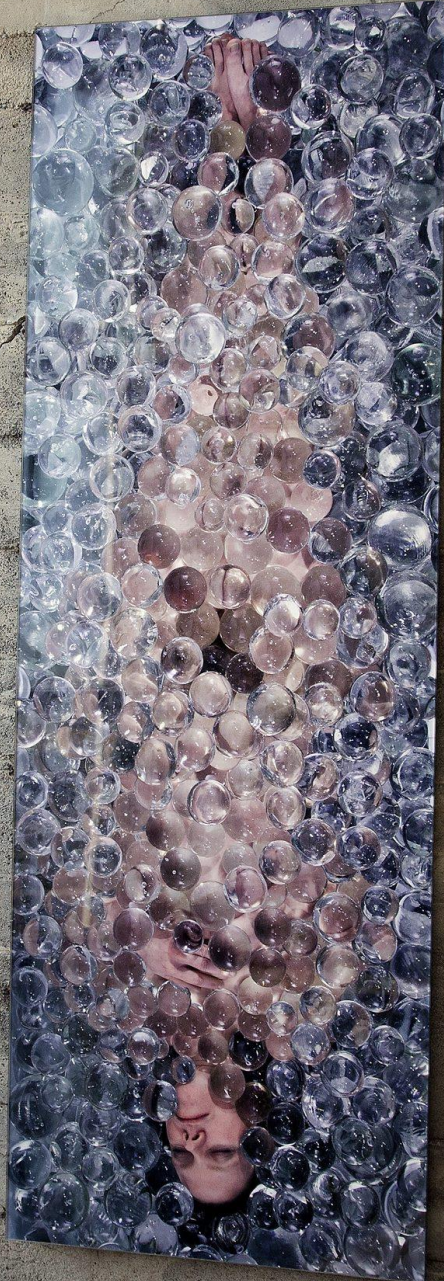
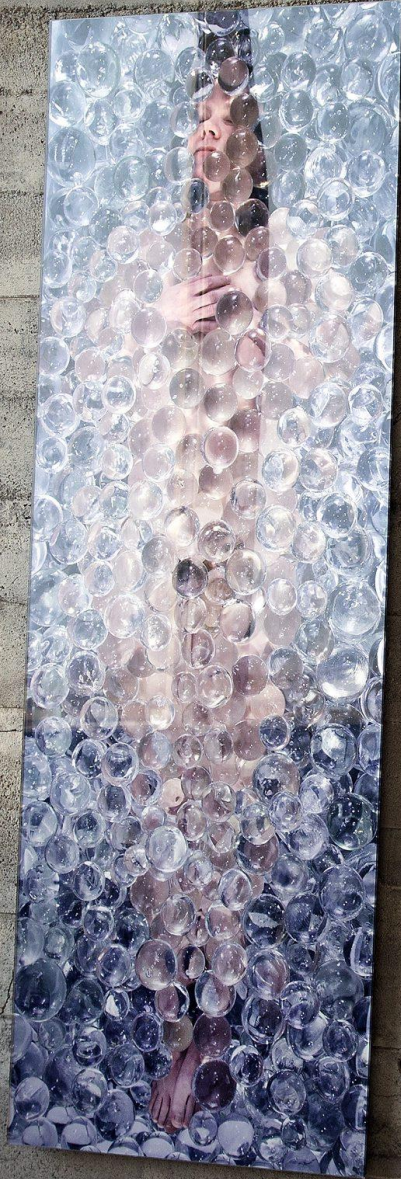








Small white rectangular label with illegible text.











**NO CAMERAS**

**#SHARETHISNOW**









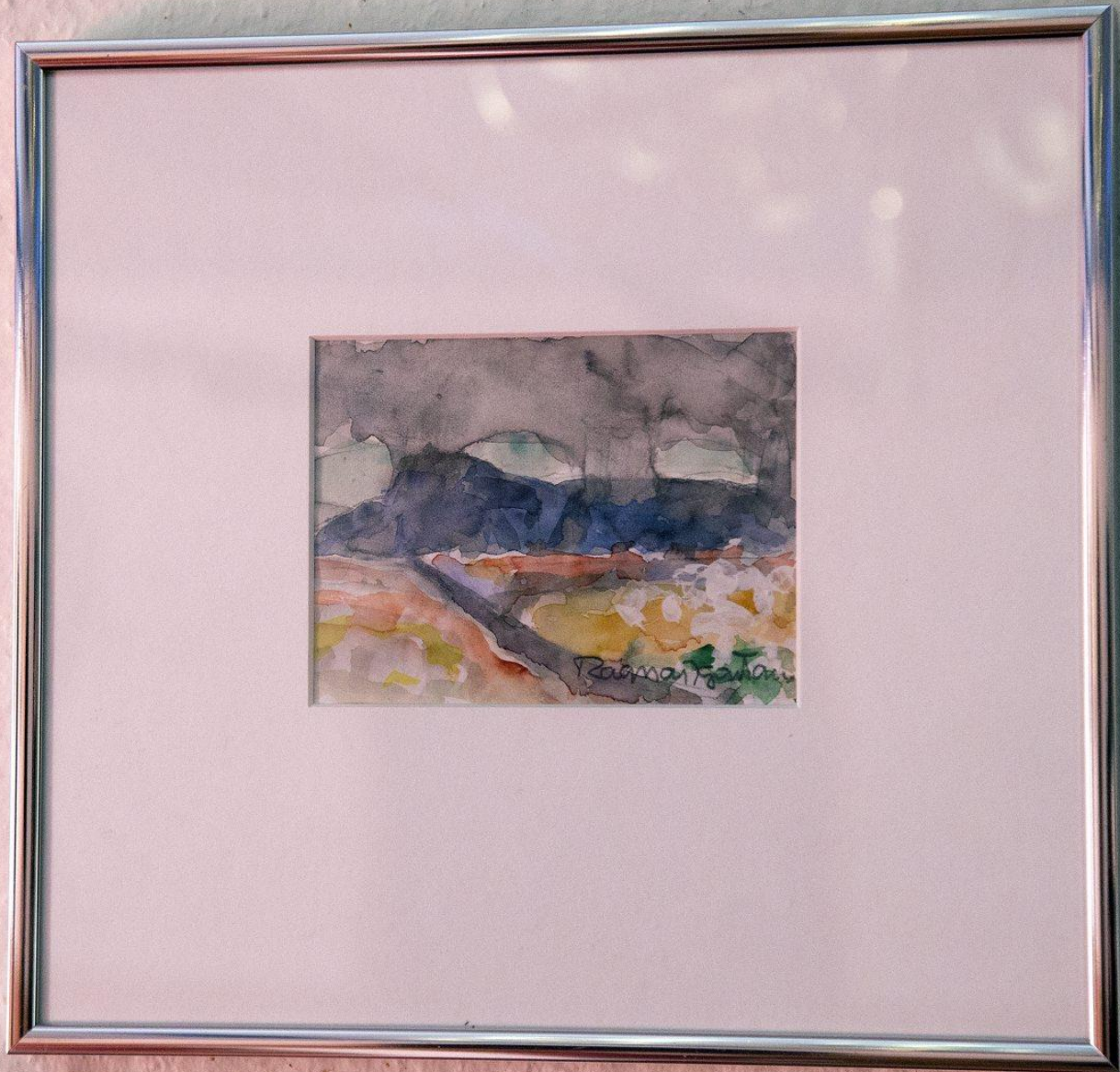








ILLUSTRATION



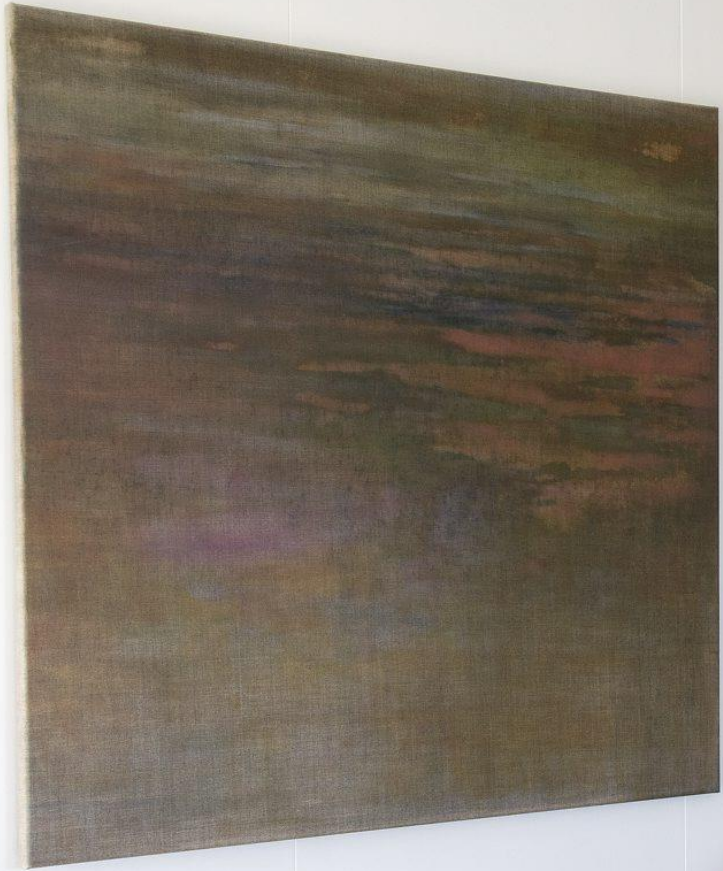




X-RAY



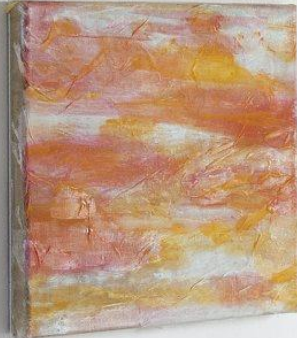




Handwritten text on a small white card, likely an artist's name and date.



Stofur  
Stofur 4 málverk í andrúni Westpark hótel  
Stofur 4 málverk í andrúni Westpark hótel  
Stofur 4 málverk í andrúni Westpark hótel  
Stofur 4 málverk í andrúni Westpark hótel  
Stofur 4 málverk í andrúni Westpark hótel



Síðlingur og Brúhljóf  
Síðlingur og Brúhljóf  
Síðlingur og Brúhljóf  
Síðlingur og Brúhljóf  
Síðlingur og Brúhljóf





Heidi Mendi eg.  
KUNNINGMACHING  
2017  
100 x 150 cm



**VIDVIK**  
RESTAURANT

Restaurant in a family owned house opened in July 2017. The restaurant provides a beautiful view over the fjord and the mountains. The menu is seasonal and changes with the seasons. The restaurant is open from Tuesday - Sunday from 12:00 - 22:00.

Address:  
1000 Reykjavik  
1000 Reykjavik  
1000 Reykjavik

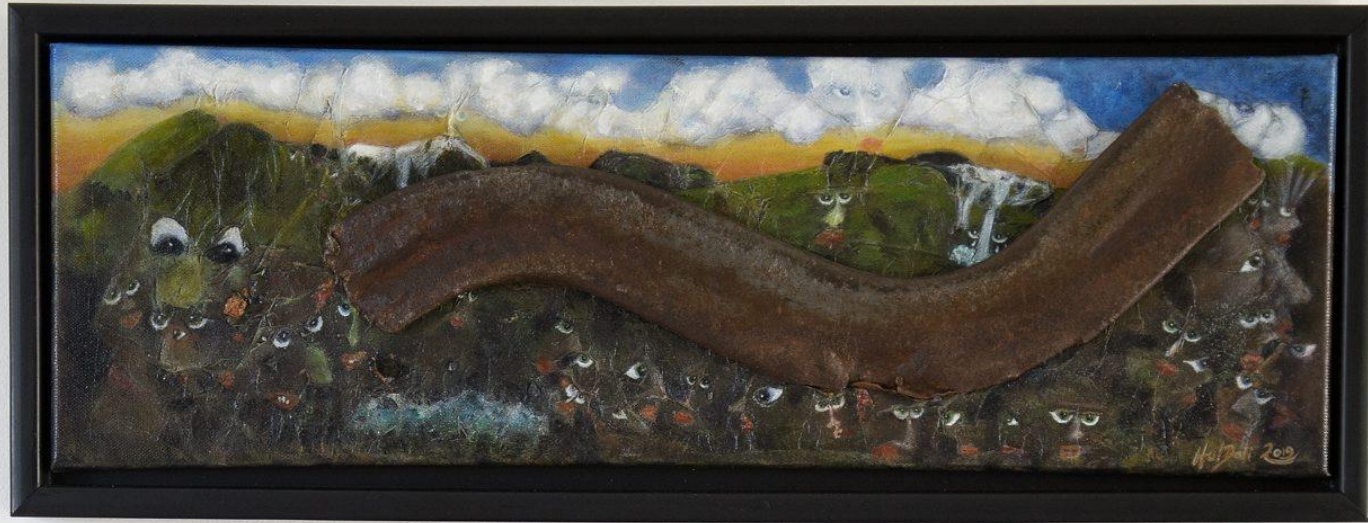
www.vidvik.is  
1000 400 1000

**HRAUN**  
RESTAURANT & PUB

Address:  
1000 Reykjavik  
1000 Reykjavik

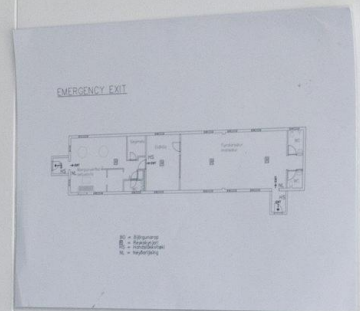
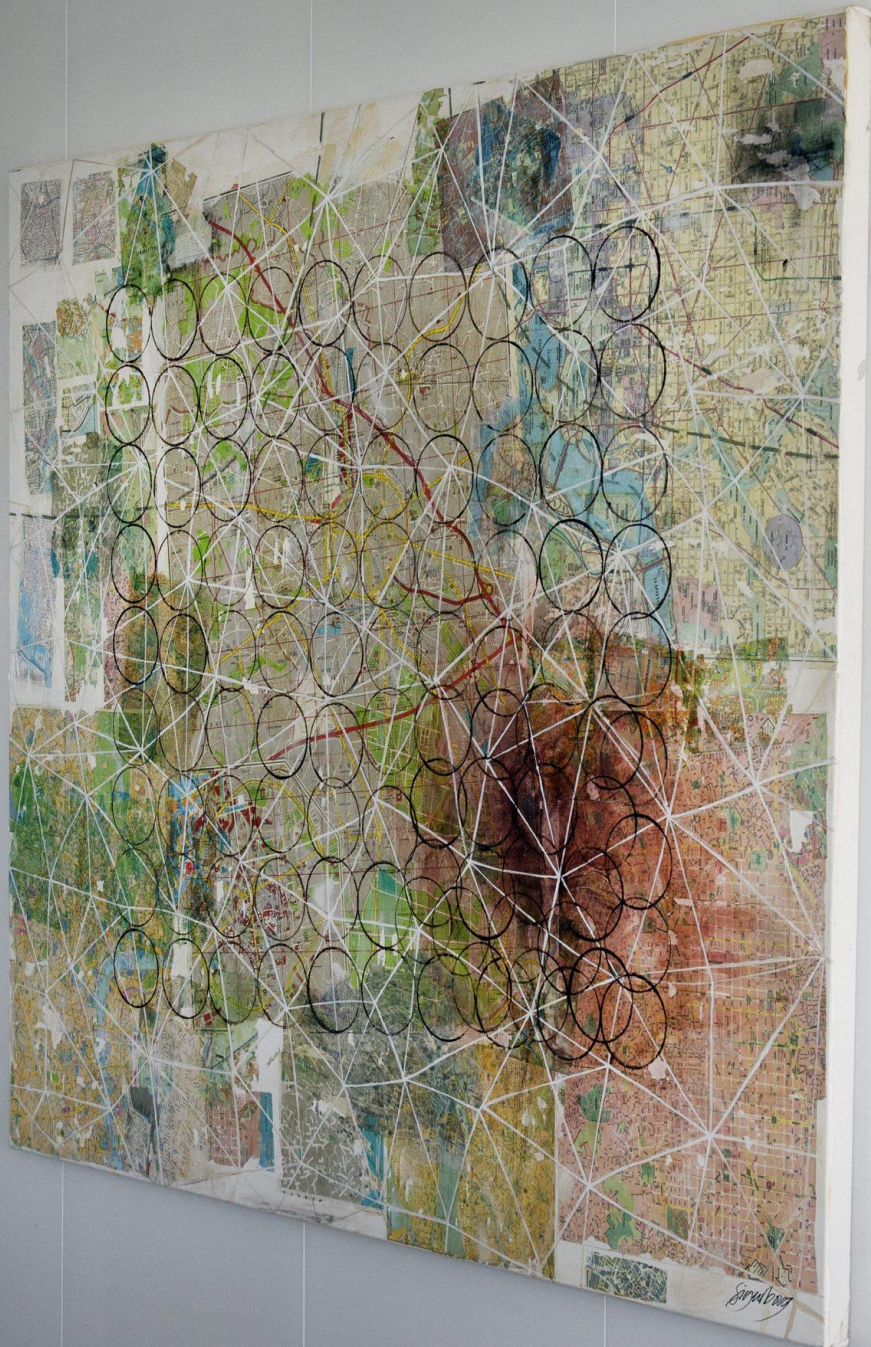
**verslun**





Hulda HreinDal Sig.  
Álter á flotta  
2019









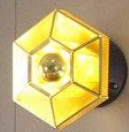




UMHVERBING







TO ANOTHER  
OCEAN







FROM ONE  
OCEAN





MA TIL KRISTS  
L TIL HAES















Small white label with illegible text.



Small white label with illegible text.



Small white label with illegible text.





Small white label with illegible text.



Small yellow label with illegible text.





Swan in Flight  
2014  
\$150





Alan McQuinn  
2011  
Oil on canvas



Alan McQuinn  
2011  
Oil on canvas



Alan McQuinn  
2011  
Oil on canvas



Abstract Painting  
by [unreadable]  
2015















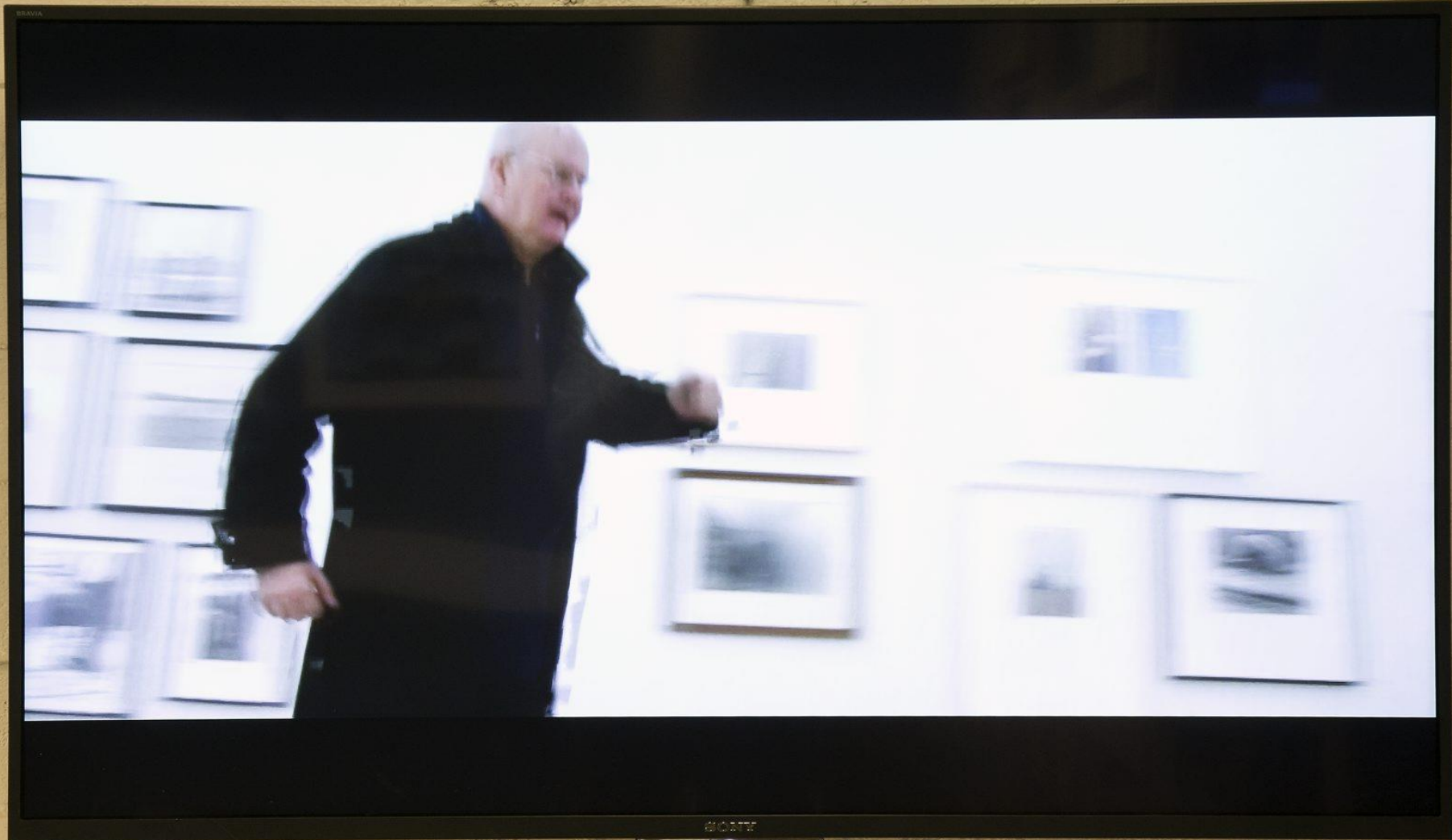
Rosa Nalodoni  
"Il cavaliere del mare"  
2015  
100x150



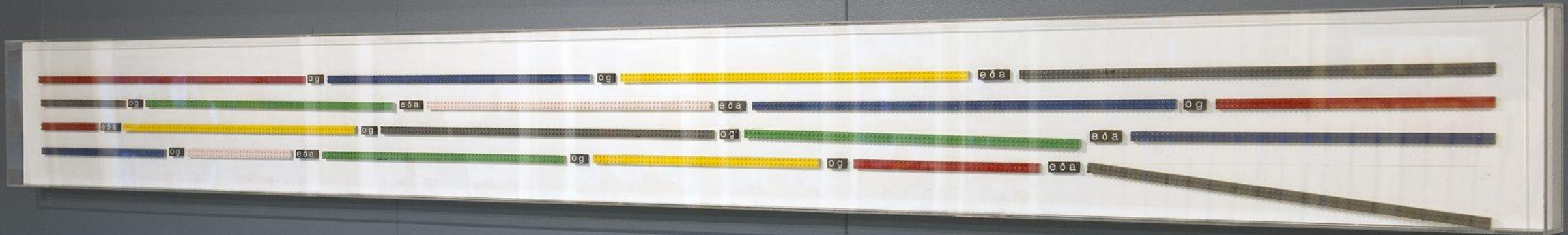


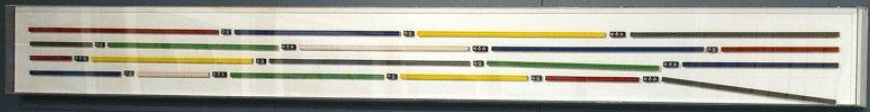
Spiegel-Gehäuse  
Hergestellt in  
Deutschland













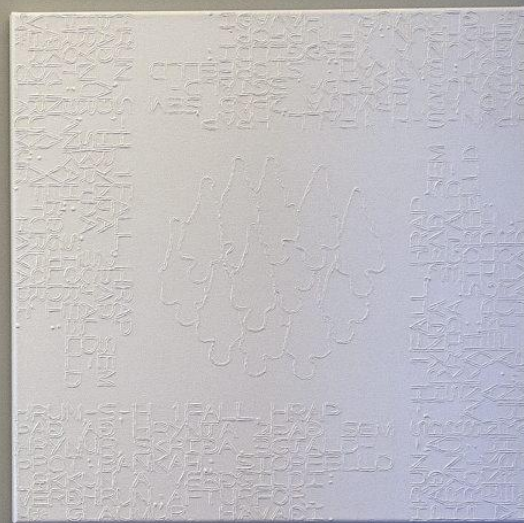
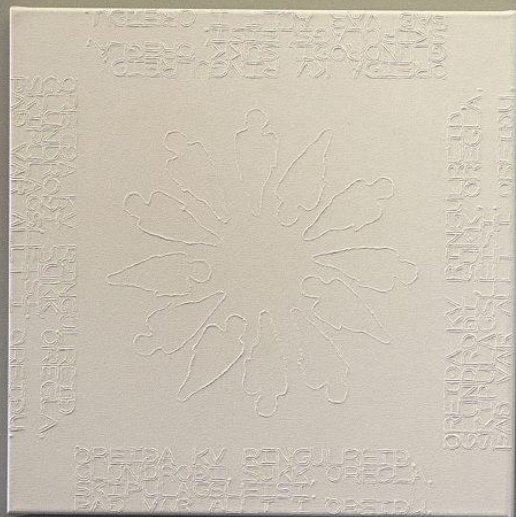










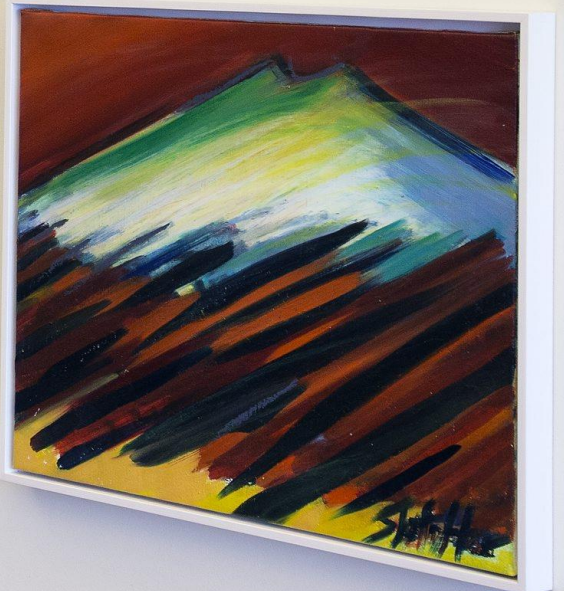


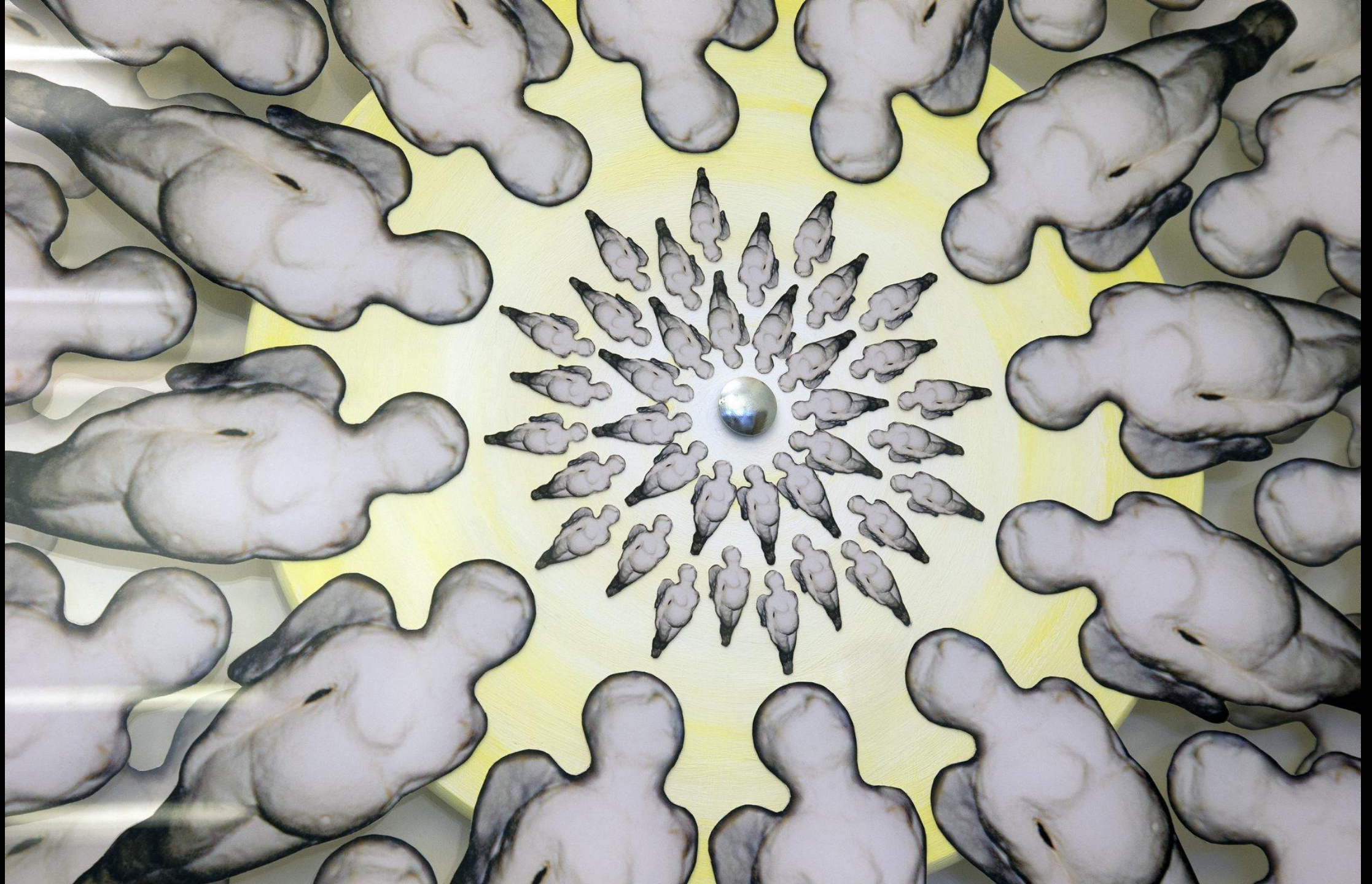
Óreyða kv Bengulófts  
Óreyða kv Bengulófts  
Óreyða kv Bengulófts  
Óreyða kv Bengulófts



GRUNDARFJARÐARBÆR





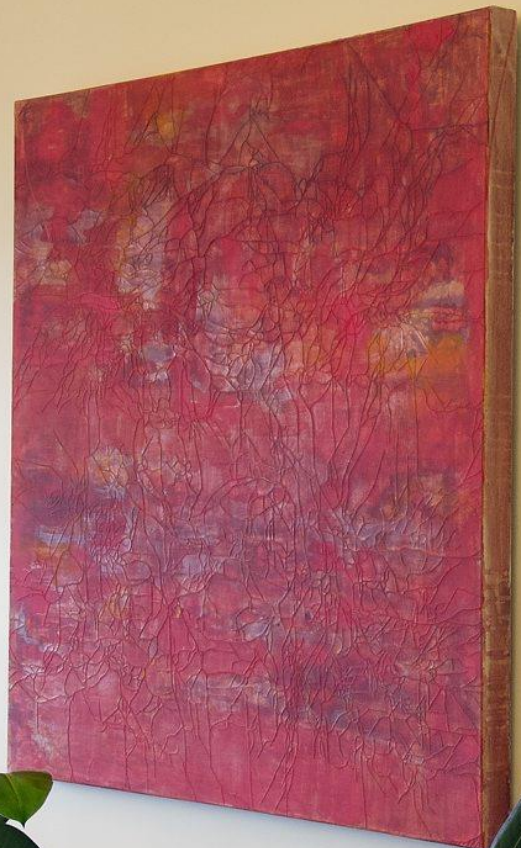














Jack Shaindman  
2014  
Oil on Canvas

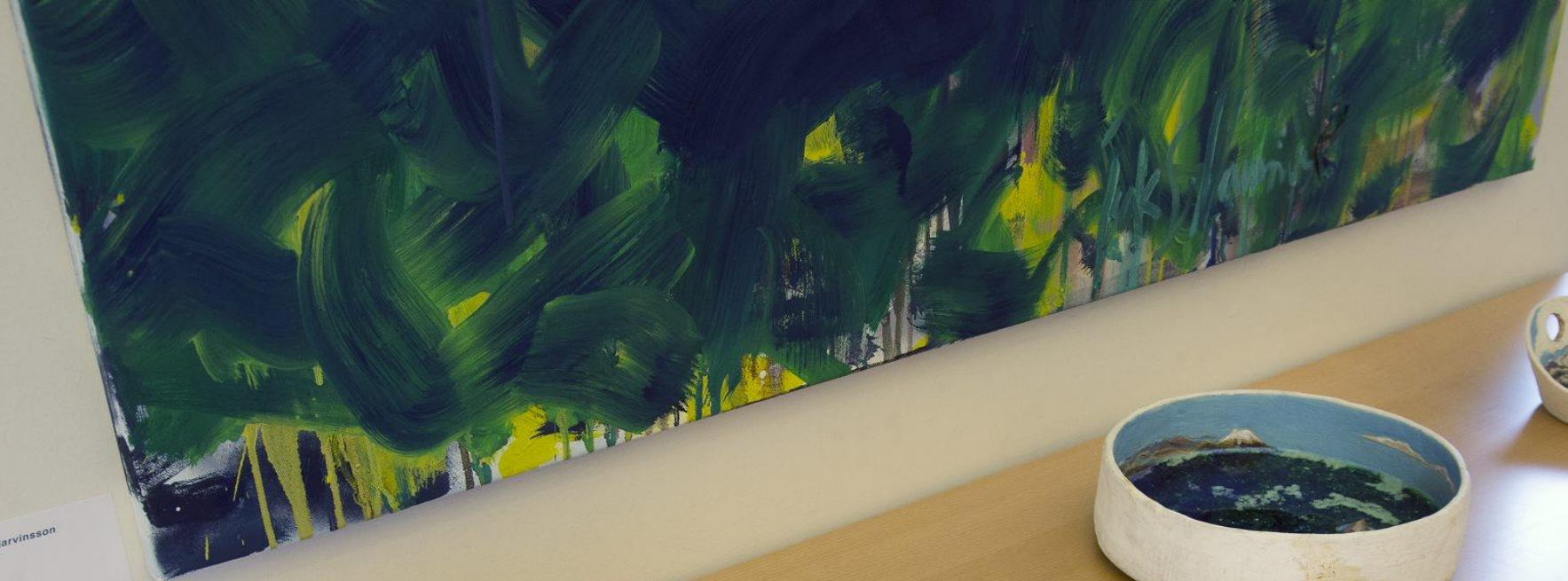


Jack Shaindman  
2014  
Ceramic



Jack Shaindman  
2014  
Ceramic





Isak Snorri Marvinnsson  
Blóm  
2019



Jon Þorðarson  
Gullur  
2011, 2012, 2013  
Gullur, Isak







ROY LICHTENSTEIN  
The World at War  
1965  
Oil on canvas  
100 x 100 cm  
© 1965 Roy Lichtenstein





*Edda Pórey Kristfinnsdóttir*

Víttaskiðli

2007  
Plaustrimgur 90 x 90 cm





BLANKALOGN

BLÆJALOGN

STAFALOGN

DÚNALOGN

LÆGI

LOGN

KOPPALOGN

ÓRDEYÐA

LÁCDEYÐA

DÚS

HÆGVÍÐRI

KYRRVÍÐRI

GRÁÐ

JANÐI

SLAFURGOLA

ANDVARI

ANDEIÐI

VINDIÐI

W.L.F.G.

W.L.F.G.

W.L.F.G.

W.L.F.G.

W.L.F.G.

W.L.F.G.

W.L.F.G.

W.L.F.G.

W.L.F.G.

W.L.F.G.

W.L.F.G.

W.L.F.G.

W.L.F.G.

W.L.F.G.

W.L.F.G.

W.L.F.G.

W.L.F.G.

W.L.F.G.

W.L.F.G.

W.L.F.G.

W.L.F.G.

W.L.F.G.

W.L.F.G.

W.L.F.G.

W.L.F.G.

W.L.F.G.

W.L.F.G.

W.L.F.G.

W.L.F.G.

W.L.F.G.

W.L.F.G.

W.L.F.G.

W.L.F.G.

W.L.F.G.

W.L.F.G.

W.L.F.G.

W.L.F.G.

W.L.F.G.

W.L.F.G.

W.L.F.G.

W.L.F.G.

W.L.F.G.

W.L.F.G.

W.L.F.G.

W.L.F.G.

W.L.F.G.

W.L.F.G.

W.L.F.G.

W.L.F.G.



Small white label with text, likely an artist's name or title, positioned below the third artwork.





Small white label with text, likely a title or description for the artwork.



**RAGNAR KJARTANSSON**  
 2015  
 SCENES FROM WESTERN CULTURE, BURNING HOUSE, 2015  
 single channel video  
 27:22 minutes  
 Edition of 6 plus 3 artist's proofs  
 ENGLISH  
 The idea for these videos came to me when I was in a bar here in New York and there was a Celine Dion song on the radio, somebody said:  
 ENGLISH  
[www.ragnarart.com](http://www.ragnarart.com)



**Ragnar Kjartansson**  
 Single channel video  
 27:22 minutes  
 Edition of 6 plus 3 artist's proofs  
 ENGLISH  
 The idea for these videos came to me when I was in a bar here in New York and there was a Celine Dion song on the radio, somebody said:  
 ENGLISH  
[www.ragnarart.com](http://www.ragnarart.com)













## Níels Hafstein

Fékk á línu niðurdreginn fisk  
fölvá sló á stirðnað dauðatárið  
aumingjann ég sauð og át af disk  
og andvarpaði inn í morgunsárið



On my line I got a doleful fish  
pallor tinged the stiffened tear of death  
I boiled the poor thing and ate it off my plate  
and sighed in the early morning heat

Translated by  
Anna Yates



Niels Hafstein

Fékk á línu niðurboginn fisk  
fólva sé á stírnætt dauðfátard  
aunngarn og sætt og á af disk  
og andspáki inn í morgunseid



On my line I got a doleful fish  
pálur trogged the scattered hear of death  
I looted the poor thing and ate it off my plate  
and sighed in the early morning heat

Translated by  
Anne Yates









NO CAMERAS

#SHARETHISNOW



Eldgosid í Eyjafjallajökull árið 2010  
The Eyjafjallajökull eruption 2010



**Cipri 2 Fimmurhúðakít.**  
Lýstingur af Cipri Amundsen fyrir völd.  
The two stones on Fimmurhúðakít. Photo by Ragnar Amundsen  
2010.

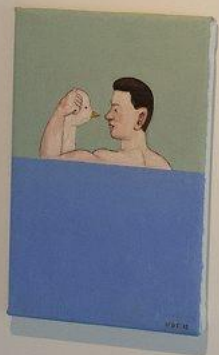
**Sprenging 2 Eyjafellshátt.**  
Fimmurhúðakít af Eyjafellshátt. Fimmurhúðakít af Eyjafellshátt.  
Fimmurhúðakít af Eyjafellshátt. Fimmurhúðakít af Eyjafellshátt.  
Fimmurhúðakít af Eyjafellshátt. Fimmurhúðakít af Eyjafellshátt.  
Fimmurhúðakít af Eyjafellshátt. Fimmurhúðakít af Eyjafellshátt.

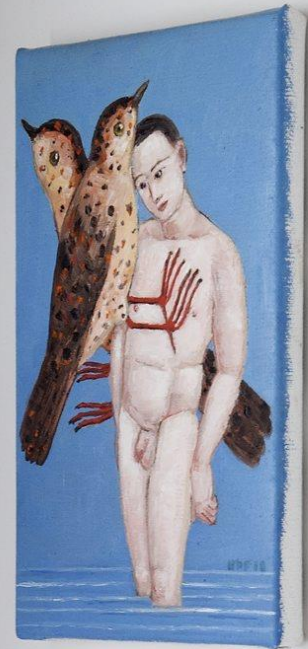
**Vindmáttur af Eyjafellshátt 2010.**  
Fimmurhúðakít af Eyjafellshátt. Fimmurhúðakít af Eyjafellshátt.  
Fimmurhúðakít af Eyjafellshátt. Fimmurhúðakít af Eyjafellshátt.  
Fimmurhúðakít af Eyjafellshátt. Fimmurhúðakít af Eyjafellshátt.





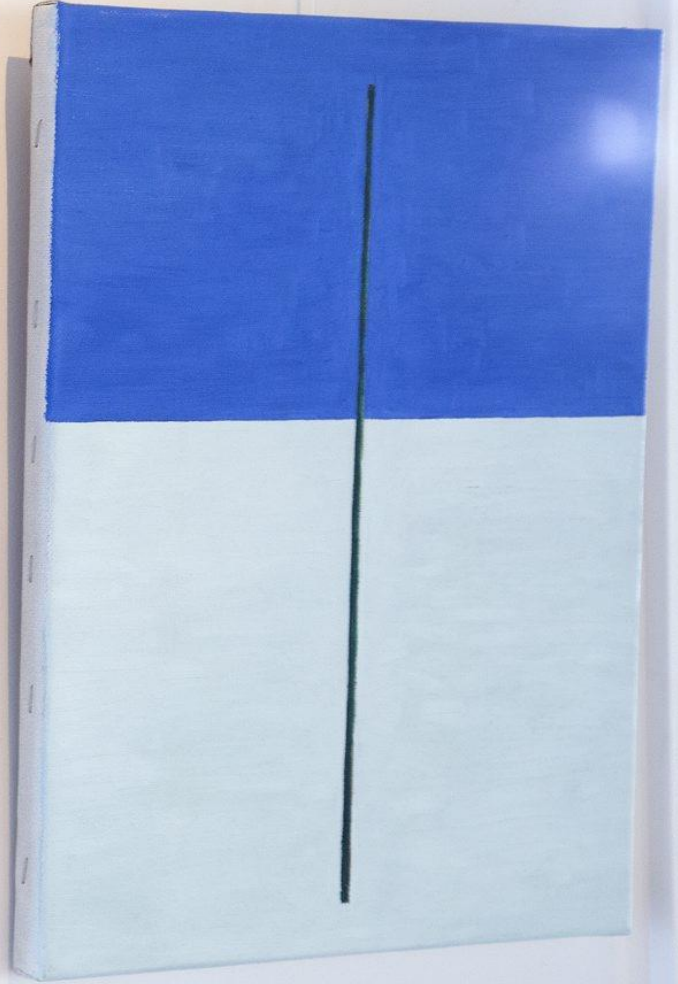
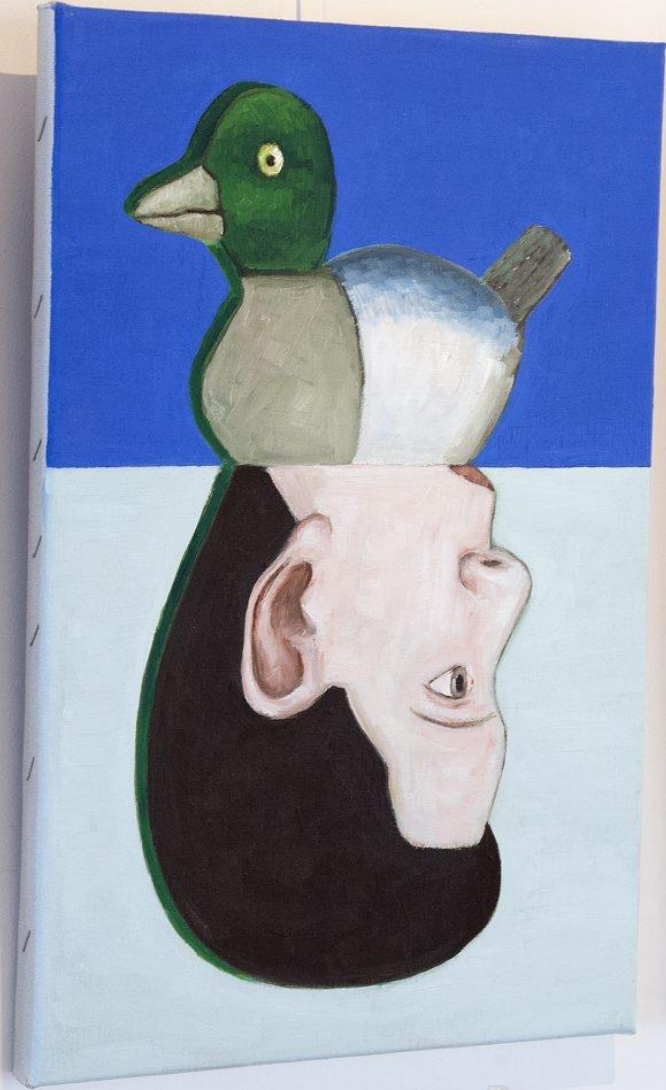


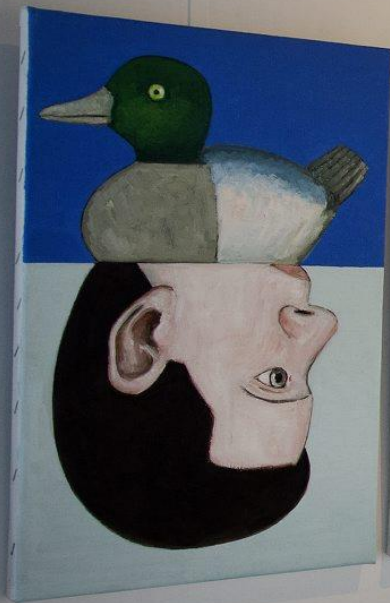




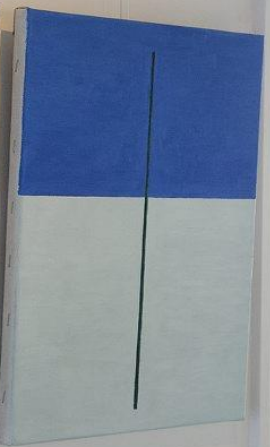


Halai Þoralls Friðjónsson





Halgi Þorgilur Þorjánsson  
Fugli og maðli  
Ólafur 1998



Halgi Þorgilur Þorjánsson  
Lína  
Ólafur 1998

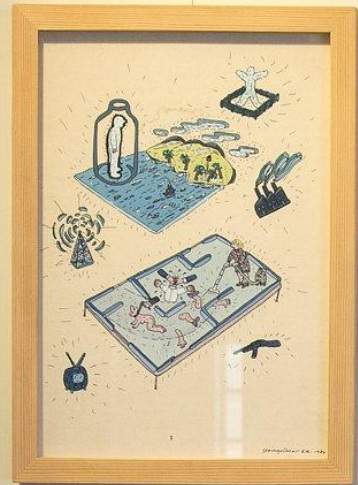




*Ragnhildur Agúsdóttir*  
Kría  
Vatnhútur og gouache, blæk og kaffi







Stalgrímur Eyróok  
Flateyjar-Freyr  
1968  
1969  
1970





Sigurberg Stefánsdóttir  
An 1988  
100% Acrylic on wood



Sigurberg Erlendsson  
1971  
100 x 100 cm





Sigurborg Stefánsdóttir  
Án 2016  
2016  
Óla og Sigrún



Sigurborg Stefánsdóttir  
An títill



Andy Warhol  
1964  
Lithograph  
© 1964 Andy Warhol  
1/100



Asta Sigurðardóttir  
1905 - 1971  
An tóla  
1960  
Vandur & Dóttir





Åker-Pöhl skåpbåt  
1800-tal  
1900





**Ragnhildur Ágústsdóttir**  
Himbrimi  
Vahnatur og grásche, bök og kaffi



John Zorn  
1994  
1994



**NO CAMERAS**

**#SHARETHISNOW**





Adalsteinn Valgerðsson  
Máttverk  
2014, 100x150 cm  
Ólía og akrýl











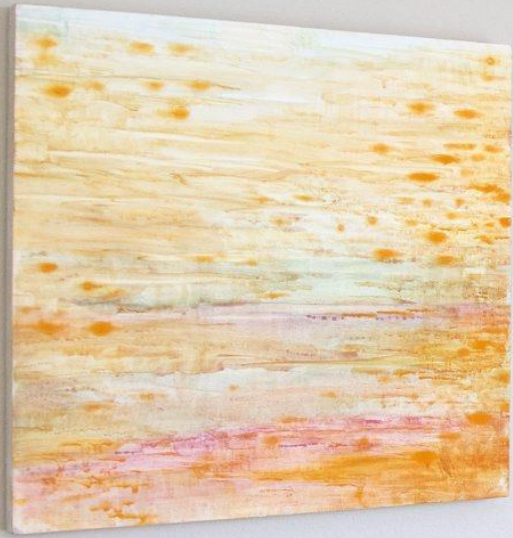


*Dóra Kristín Halldórsdóttir*  
Brú milli heima  
2016  
Vatnsmál á pappi





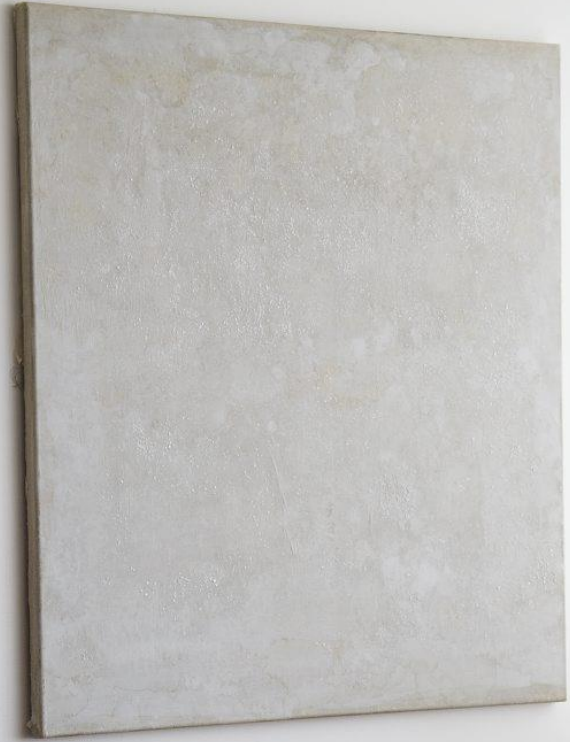
Arto Anttila  
Kokko  
2012





Autumn Leaves  
by  
[unreadable]  
[unreadable]







Small text label, likely an artist's name or title, located below the artwork.







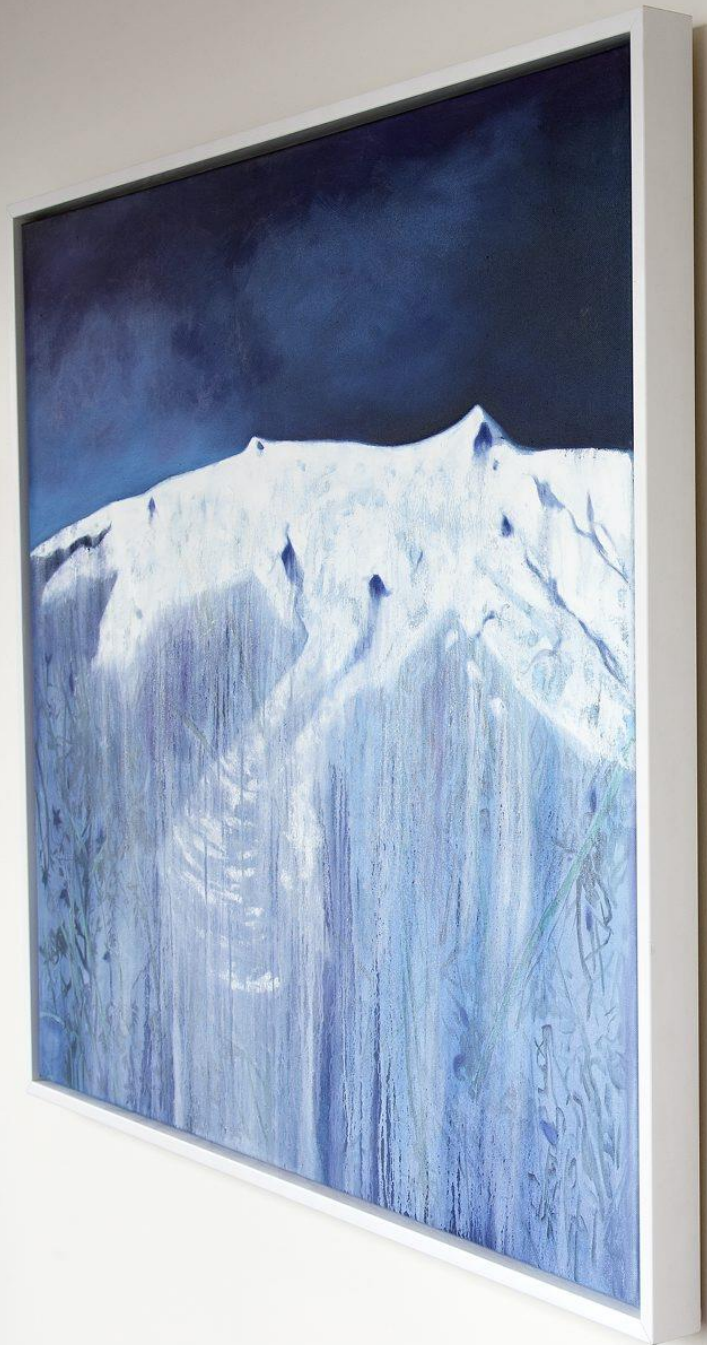
Margrét Jónsdóttir  
In memoriam  
2018

MÓTTAKA RECEPTION →



Margret Jónsdóttir  
In memoriam  
2019

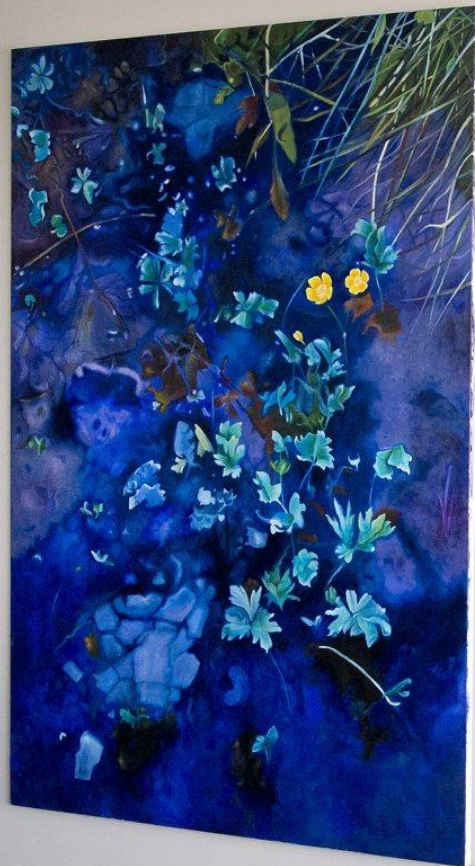








MARKA KRISTOFFER  
M. TITLIS









MÖTAKA RECEPTION



NEW YORK



STYKKISHÓLMUR



ROME





Small white label with illegible text, likely an artist or title label.



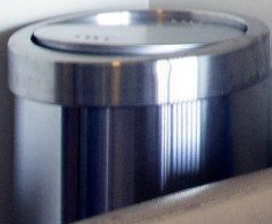


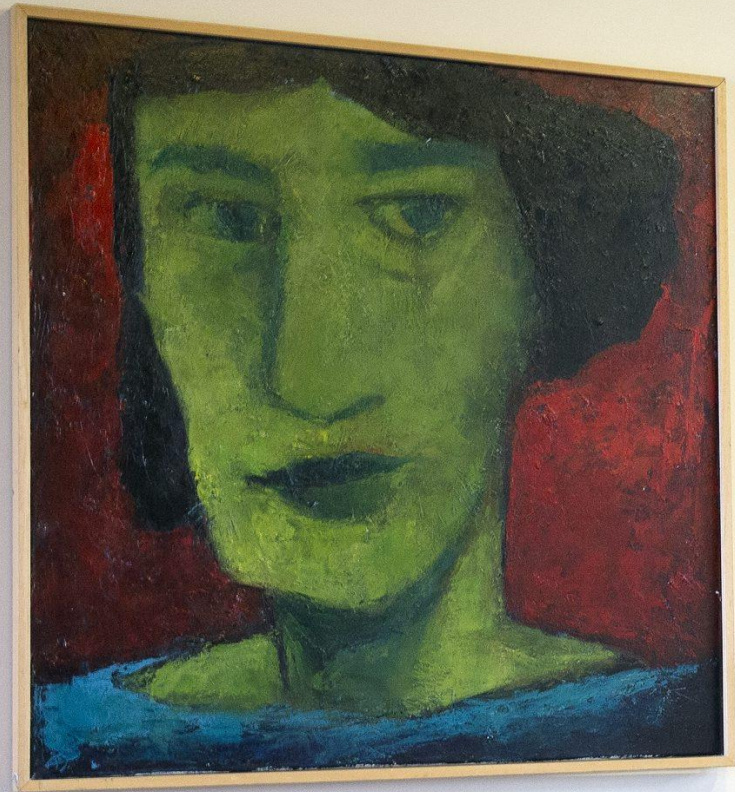


THE BLUE HORIZON  
2014  
100x150cm



THE BLUE HORIZON  
2014  
100x150cm





Small white label with illegible text.





Johanna Nieminen  
Johanna Nieminen  
Johanna Nieminen













1960s  
Abstract painting  
1960s



Small white label with illegible text, positioned below the left painting.

Small white label with illegible text, positioned below the right painting.





THE  
EYE  
OF





















o







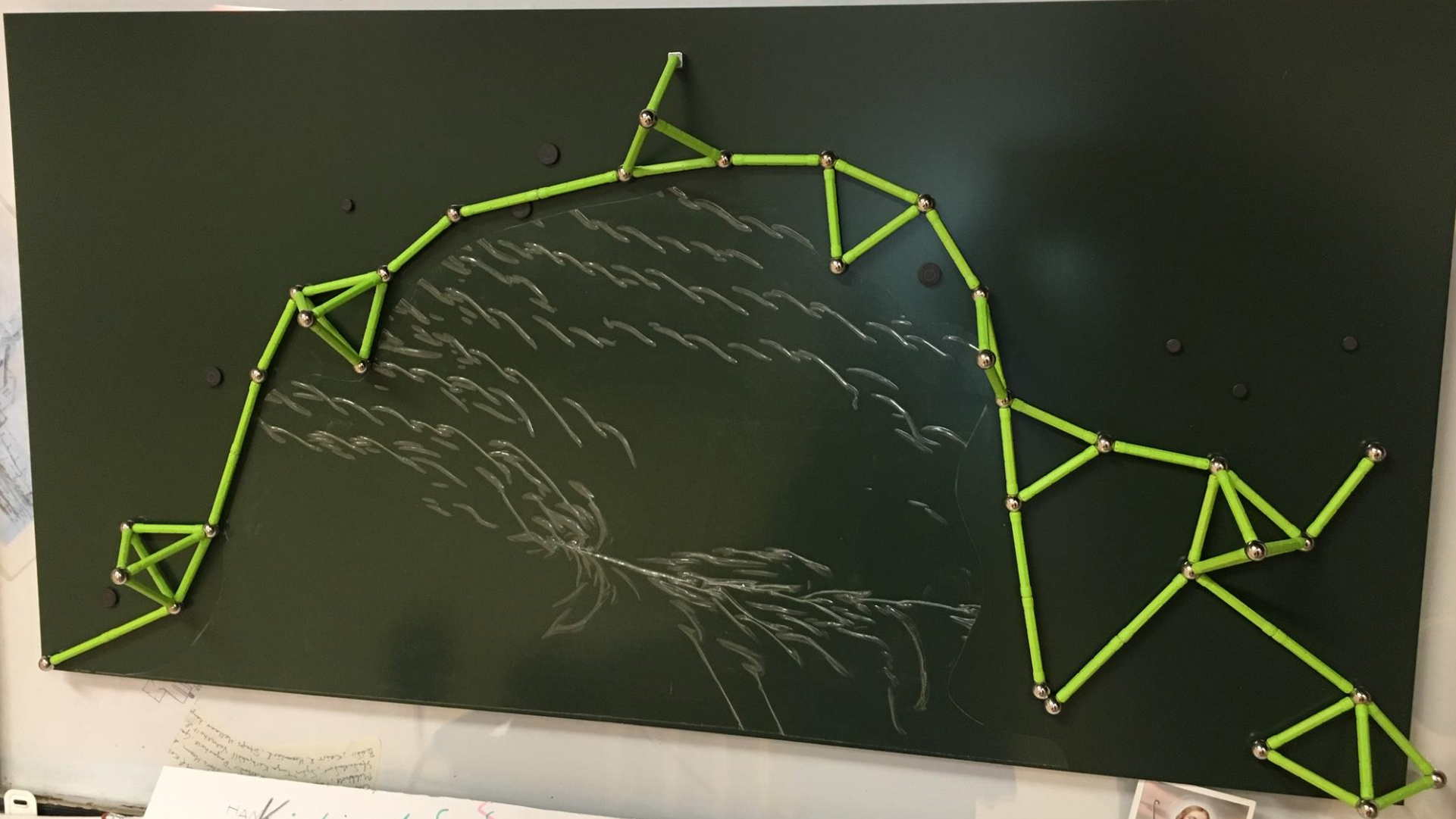
Handwritten graffiti on the wall to the right of the artwork, consisting of several large, stylized, and somewhat illegible characters or symbols.





A  
á staðar í að  
er mér  
sem gæta innviðum vat  
þessir eru til hús.

Berg



Kirkjustadir, ~~D~~enhus & hálfkirkinn etc.







*[Faint, illegible handwritten text, possibly bleed-through from the reverse side.]*

*[Faint, illegible handwritten text, possibly bleed-through from the reverse side.]*